



PRODUCT CATALOGUE



2025/2026 EDITION

RADIOGRAPHY ACCESSORIES

4_in_1_Mini_Alarm_Light



Dimension: $\varnothing 70 \times 90 \text{mm}$

Voltage: DC3.6–4.5V

Power: 2w

1. Consist of high light luminous diode, time circuit and chargeable battery, controlled by the switch next to the light.
2. Flash rate is 40–60 times/minute. don't have sound.
3. Alarm light brightness turns lower and flash rate turns faster when power lower.
4. When make charging, please find power switch on the back of charger, press the switch to "I" and make charging.
5. When stop charging, pull off the charging plug and press the switch to "O".
6. Lights same time charging, 1 hour charging can support 8–10 hours work, longer charging time support longer time. Maximum Charging time is 5 hours.
7. The alarm light charge by appointed charger only, can't use any other charger. *

Ceramic_X-Ray Tube_Industrial_NDT_Fields



XTG series ceramic x-ray tube includes 100kv—350kv models, tube current 5mA. Parameters in accordance with international standards; exchange with same model available; take first grade

JME

ipsi GULMAY



YXLON



comet



sales@byronglobalent.com



07069992402

oxygen free copper and special isostatic pressing ceramic in oil free vacuum system for keeping good quality.

Darkroom Timer



- Darkroom timer is controlled by single chip to keep a convenient operation and accurate timing function. The timing length is 0-30 min.
- The illuminated display part adopts high brightness tubes to achieve longer service life; brightness can be adjusted.

Dark-Room-Red-Light



Our Dark room safe light is a new intelligent product, the part of control uses micro-controller programming.

1. Regular time is from 0 to 30 minutes. The Minute and Second can be set.
2. Accuracy time, easy to use.
3. Using a high brightness LED light.
4. Long life, with adjustable brightness.

Detector_Tripod_Stand



Product	Parameters
Tripod	Theory: Hydraulic drive Adjustable Height: 500-2000mm Weight: 50kg Load capacity: 50kg

X-ray Marker Ruler



Film Hanger



JME
JOURNAL MANAGEMENT ENTERPRISES

ipsi GULMAY



YXLON



comet



sales@byronglobalent.com



07069992402

Lead Intensify Screen



Lead intensifying screens are primarily used to intensify the radiographic image.

They are generally used in pairs by placing the x-ray film. Between the bare lead surfaces of the screens, each screen surface is protected with a semitransparent coating, which must be peeled off prior to use. For maintaining long-lasting screens it is highly recommended that a cassette be used.

Glass X-Ray Tube Industrial NDT Fields



Glass x-ray tube include 100kv—350kv models, tube current 5mA. Parameters in accordance with international standards; exchange with same model x ray flaw detector available.

Generator Tripod for Boilers and Pressure Vessels



This tripod stand is used inside of the boiler, designed for boiler and pressure vessels inspection work.

Adopt aluminum alloy in order to decrease the weight same time ensure stability and strong structure.

Easy to take, 360 ° lift and rotation design, assist the x ray device at work at any angle and improve the work efficiency.

1. **Height Adjustable Range:** 400-1350mm
2. **Rotation Angle:** 360°
3. **Max. Load:** 45kg
4. **Tripod leg Span:** 520-830mm
5. Each x ray model has different size tripod.

PIPE CRAWLER ROBOT

Uses: Used for defect inspection and repair of natural gas pipelines, oil pipelines, urban water supply and drainage pipelines, water pipelines and other pipelines.

YKD18S



JME
INDUSTRIAL SYSTEMS

ipsi GULMAY



YXLON



comet

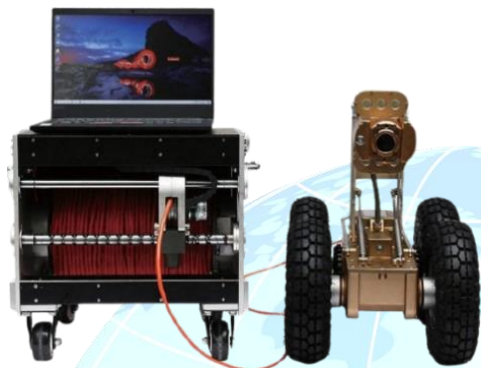


sales@byronglobalent.com



07069992402

YKGD-X6



YKSeries video scope



JME
JULY 2011

ipsi GULMAY



YXLON



comet



sales@byronglobalent.com



07069992402

TVS2000 SERIES

TVS2000 has the characteristics of intellectual, easy operation, light control, and humanization design. It can realize multi-language text input, editing and on-site defect interpretation, the series of crawlers can meet the requirement of inspection varying from all kinds of material pipes from DN150-DN2000mm.



APPLICATION SCENARIOS



Mine Inspection



Municipal pipeline inspection

JME

ipsi GULMAY



YXLON



comet



sales@byronglobalent.com



07069992402

CRAWLER RANGE



CR2 PIPELINE CRAWLER SYSTEM

The JME 6:CR2 Pipeline Crawler is specifically designed for non-destructive testing of circumferential butt welds in tubular installations such as oil and gas transmission pipelines. Our 2nd Generation CR2 range is the world's most 'Technologically Advanced' NDT crawler system. The JME 6:CR2 Pipeline Crawler is extremely compact and lightweight, deployable in an Internal Diameter (ID) range between 5.5" (140mm) and a maximum of 18" (457mm). Coupled with X-Ray generators from JME or ICM, this system can produce internal panoramic single-wall-single-image (SWSI) radiographs of very high quality.

The crawler can be commanded using JME's Magnetic Control System (Magnetope), or a conventional isotope control system, additional features are accessible using our brand new CR2 Remote Handset.

JME REMOTE HANDSET | JME ADVANCED INSPECTION SYSTEMS



The JME CR2 Remote Handset enables never before seen control and monitoring capabilities of the Pipeline Crawler systems during active operations. With multi-language support and an intuitive User Interface it enables easy setup and configuration of the entire system, including the X-Ray tube before deployment. Real-time data from the Crawler system provides critical information of Drive Status, Battery Levels, Sensor, Exposure Parameters and Adjustment, while the Safety Override and Recovery Features ensure added safety and reduced downtime. The versatile JME Remote Handset allows continuous status monitoring of compatible JME Crawlers throughout their operation. Users can access and adjust various parameters and settings effortlessly, extending functionality up to 2km

with the JME CR2 Radio Repeater / Extender. The user-friendly interface boasts a graphical 4.3" touch-screen display, LED indicators, and a 5-way button control for use with Gloves. All via communications approved worldwide without special licensing. The pairing mechanism ensures data display only from the appropriately paired unit and accepts commands solely from the corresponding Handset. JME's Remote Handset streamlines pipeline operations and maximizes control over CR2 Crawler systems for optimal efficiency. With hundreds of units now in the field, alongside a proven ability to improve safety, reduce downtime and enhance workflow, JME's CR2 Pipeline Crawler systems in conjunction with a handset, give you the edge for any pipeline tenders and subsequent work operations.

CR2 TEST BOX



The CR2 Test Box is designed to plug into any CR2 E-Box via the E-Box connector using an interconnecting cable. Using a simple control and interface method the Test Box can perform a variety of tests automatically at the touch of a button.

With visual feedback displayed directly on the test box, the user is able to quickly and efficiently identify any faults with the Pipeline Crawler System. Because of its compact size, a full range of tests can be performed on site, minimising down time and allowing the user to quickly replace faulty or damaged components.

The Test Box simulates sending commands to the E-Box to mimic live operation. Each of the following tests can be enabled/disabled to create a custom test routine.



PORTABLE X-RAY BETATRON SYSTEMS



JME portable Betatron systems are a range of compact circular electron accelerators producing a high energy directional X-Ray beam. The Betatron systems are easy to assemble, operate and maintain. They contain no moving parts or cooling liquids so maintenance required on the systems is minimal. They are capable of producing radiographs of very high contrast, sensitivity and resolution allowing operators to meet the tightest inspection standard. JME offer 5 systems within the Betatron range each with a different maximum energy, the outputs are 2.5, 6, 7, 7.5 and 9MeV. The energy output on all systems is variable from 2MeV through to the maximum energy and adjustments can be made in 0.1MeV increments. The systems offer cost savings and a greater degree portability when compared with a Linac generators and provide greater flexibility for more mobile inspection tasks.

FEATURES

- Completely Portable
- Output energy selectable up to 9 MeV*
- Excellent sensitivity and resolution
- Penetrates upto 11.81 inch's (300mm) of steel 39.37 inch's (1m) concrete*

JME DXB:1 DIGITAL X-RAY BUGGY



JME would like to present our newest product, the DXB:1 Digital X-Ray Buggy; designed to produce high-quality panoramic digital radiographs of circumferential welds in applications such as new pipelines. As a versatile and configurable system, it can also be utilized for use in various non-pipeline applications, such as the inspection of tank walls or other ferrous metal structures.



✉ sales@byronglobalent.com

☎ 07069992402

This digital system is a replacement for traditional film radiography; so no more chemical processing, dark rooms, or flaws associated with conventional radiography. The DXB includes a high-definition digital panel for instant verification of image quality and system settings. Images are digitally stored, preventing the need for film storage and enabling a permanent record to be saved within the control tablet. These can be backed up via USB or using a Network connection, allowing the images to be sent to an off-site Radiographer seconds from acquisition.

JME's DXB system also communicates and integrates with our entire CR2 Pipeline Crawler Range. This allows 2-way communication between the Pipeline Crawler and DXB, giving configuration of key crawler parameters from the DXB control tablet. This integration also allows commencement of inspection with the push of a single button. The DXB operator is able to control, adjust and view the status of the **CR2 crawler** at all times during an inspection task.

With a rapid magnetic deployment system, the DXB:1 can be positioned by a single person in less than a minute. The system is attached using permanent magnets, meaning in the event of a loss of power the unit will remain firmly attached to the pipe. This quick and efficient deployment dramatically increases productivity on-site. There is no need for welding bands to be deployed and relocated between each inspection which again greatly improves efficiency on-site.

FILM PROCESSOR DRYER



P-17A Automatic Film Processor

P17-A x ray film processor is one the most classic product during PROST industrial products, since the advent the customer give the high praise because of unique and beautiful model which, flushing it out of the film clear dry, improve the efficiency and accuracy of testing, Widely used in aerospace, aviation manufacturing, industrial and mining detection, pipeline construction detection, pressure vessel boiler, etc.

Features

1. Dupont materials which are of high-precision roller and ensure the safety of the transmission of any size film.
2. Special design of the stop film tank, can greatly improve the efficacy of fixer, for mass film flush. Process: development and stop washing, upper fuser (fixer), small of water, water, drying.
3. Beautiful atmosphere, the operation of freedom. And focus all the function on only body, just switch it on, you will be able to view its fix, develop temperature, drying temperature, replenishment , running state of the film. Easy tounderstand and be clear at a glance.

4. The international brand electronic control speed motor system, stable, durable, quality assurance. Set monitoring, speed regulation in one body.

ZY-28 Film Dryer



ZY-28 film dryer is designed for the drying of hand-washed X-ray films. It has changed the way of drying or drying in a drying oven, shortened the drying time of several hours or even days to about 2 minutes.

The transmission parts of the dryer are made of ABS engineering plastics and stainless steel corrosion-resistant materials, and precise PBT gear transmission, stable and reliable operation, fast drying speed, good effect, energy saving, simple and convenient operation.

Beautiful in appearance, small in size and not corroded. Increase the drying speed of the film and shorten the cycle of radiographic inspection. Especially for users who work in the field and use in mobile darkrooms.

FILM VIEWER AND DENSITOMETER



DT-200 separate probe type densitometer used for measuring the transmission density of x-ray film.

The unit has been designed for using in one-site mobile darkrooms, laboratories and offices.

Characteristic:

- Separate Probe Type Densitometer
- High Accuracy $\pm 0.03 D$
- 10 Points Calibration
- Big Display Screen with backlight, Easy for reading
- Extremely wide light range of between 650 Cd/m^2 and $320\,000 \text{ Cd/m}^2$

ZY586 Digital Black White Densitometer



ZY586 digital densitometer uses a very stable light source, and a photoelectric sensor with high precision, analysis the data through single chip analog-digital conversion, read accurately and stable, easy to operate. Each instrument has the density sheet, used for verifying the accuracy of the instrument. It can be widely applied in nondestructive detection, medical and other industries, to analysis the quality of pressure vessels, ship, chemical, bridges, hospitals and other X CD.

ULTRASONIC PRODUCT



MFD500B ultrasonic flaw detector with 320×240 TFT LCD, it can test, orient, evaluate and diagnose various flaws such as crack, lard, air hole in workpiece's interior swiftly and accurately without any

destruction. It can be used in Laboratory as well as in engineering field. With range of 0-9999mm, it can meet the requirement for general defect inspection in manufacturing industry, metallurgical industry, metal processing industry, chemical industry and so on. Low power design with large capacity and high performance lithium battery module, it can be long standby for months. High quality with low price, it is the first choice for the practical economic model for ultrasonic testing equipment.

The instrument can be widely used in locating and sizing hidden cracks, voids, disbands and similar discontinuities in welds, forgings, billets, axles, shafts, tanks, pressure vessels, turbines and structural components.

Robust Pro 256/256 Phased Array Ultrasound Board



The Robust Pro 256/256 high-end phased array ultrasound board is developed by Doppler. It is a high-performance and high-resolution board that integrates 256 independent parallel transmission and reception channels (256 parallel transmission channels, 256 reception channels for acquisition and processing), 2.5 ns high-precision acoustic (optical) beam delay control, and data can be quickly uploaded to personal computers or other technology platforms in real time. Based on the particularity of its large number of channels, it can fully leverage the advantages of probes such as Matrix array, DMA probes, greatly expanding the application fields of phased array technology, and is widely used in fields such as nuclear power, aerospace, high-speed railways, power.

MT PRODUCT

ZYM-420 Magnetic Particle Flaw Detector



Multifunctional magnetic flaw detector using thyristor as a switch without contact, Low noise, long service life, simple operation, strong adaptability, stable work.

JME

ipsi GULMAY



YXLON



comet



sales@byronglobalent.com



07069992402

Magnetic Weight Lift Test Block



Magnetic Weight Lift Test Block provides for the calibration and certification of Magnetic Particle Inspection.

Place Yoke legs on the test Block at the recommended spacing. In the AC mode, energize Yoke and lift the test bar (4.5 Kg). For the DC lift test, (18 to 22.5 Kg) With the Yoke set in the DC mode follow the procedure as described above.

NDT EQUIPMENT

DJ-6B Holiday Detector



Holiday detector DJ-6B is a high-voltage special detector that is used to detect the quality of metal anti-corrosion coating.

This detector can detect different thickness of coatings, such as glass lining, glass reinforced plastic, epoxy coal tar, rubber lining and so on. The detector will emit bright sparks and with sound alarm when something is wrong with the coating, such as the emergence of pinhole, air bubbles, fissures and cracks.

As powered by Ni-MH battery, and with small size and light weight, it is especially suitable for field operation. The detector is the essential tool used for detecting the quality of metal anti-corrosion coating and can be used widely in many industries including chemical, petroleum, rubber and ceramic, due to its sophisticated design and stable & reliable performances.

Pipeline Endoscope



ZT-70B Pipe Endoscope Camera diameter is 17MM, suitable for 18-300MM diameter pipe. Adopt imported LCD display, HD light-sensitive chips and high definition camera. Lights with night vision capabilities, adjustable brightness according to environment. High capacity rechargeable lithium battery, real time showing the energy situation. Camera outside use stainless steel to keep long term use.

HARDNESS TESTER

MH310 Portable Leeb Hardness Tester



MH310 portable Leeb hardness tester, based on Leeb hardness measuring principle, quick and easy on-site test the hardness of series metal materials, support free conversion between Leeb, Brinell, Rockwell hardness scale and others, It uses high-contrast segment LCD to display clear, stable performance integrated high-speed thermal printer, which can print on-site measurements.

It is widely used in annealing, tempering, quenching, quality control for the work piece hardness testing for machine tool and automobile chassis on-site hardness testing of in-service non-

removable parts quality testing for hardware forging, machine tools and special steels quality control for batch production process and so on.

Good quality and effective cost ,which is a wise choice for regular need of hardness testing .

MICRO HARDNESS TESTER



Micro hardness tester, based on the principle that positive quadrangular pyramid diamond indenter presses the surface of the sample to produce indentation. By measuring the diagonal length of the indentation to achieve the measurement of the hardness of the material can be for small specimens, thin specimens, surface coating, heat treatment of the workpiece surface Vickers hardness test.

With stable performance, strong structure, high reliability, simple operation, adopt high magnification optical measurement system, adjust the cold light source, photoelectric sensing technology and computer-aided means it has a powerful function.

Widely used in the fields of metal processing, electronics industry, mold parts, watch manufacturing, engineering quality inspection and so on. It is an ideal hardness tester for material research and testing.

LAB TESTING MACHINE



Mainly suitable for testing metal and non-metal materials, such as rubber, plastic, wire and cable, optical fiber cable, safety belt, safety belt, leather belt composite material, plastic profile, waterproof coil, steel pipe, copper material, profile, spring steel, bearing steel, stainless steel (and other high-hardness steel), castings, steel plates, steel strips, stretching, compression, bending, shearing, peeling, tearing, and two-point extension of non-ferrous metal wires (need to be ordered separately) Extensometer) and other tests.

This machine adopts mechanical and electrical integration design, mainly composed of load cell, transmitter, microprocessor, load driving mechanism, computer and color inkjet printer. It has a wide and accurate range of loading speed and force measurement, and has high precision and sensitivity for the measurement and control of load and displacement. It can also perform automatic control tests of constant-velocity loading and constant-velocity displacement. The floor-standing models and the modeling and painting have fully considered the relevant principles of modern industrial design and ergonomics.

UT INSTRUMENT

Anyscan-30 Ultrasonic Flaw Detector



Digital ultrasonic flaw detector Anyscan-30 is a portable industrial non-destructive flaw detector, which can quickly and easily, without damage, accurately detect a variety of work piece defects (cracks, inclusions, cavity, etc) of the detection, location, assessment and diagnosis. Both can be used in laboratories and project site. Anyscan-30 is widely operated in the field of flaw detection and quality control, such as manufacturing industry, metallurgy of iron steel, metal processing industry, chemical lines, as well as operated in in-service safe inspection and life appraisal, such as aerospace, railway transportation, boiler and pressure vessel safety check in service and life assessment.

Anyscan-30 is equipped with imported lithium batteries, no memory effect, with high capacity, batteries service time can up to more than 8 hours, it is priority choice for testing operations especially for field work.

Features

1. Leading technical target, abundant applied assistant function
2. Intelligible setting of keys and menu, easy to operate
3. 400 MHz real-time hardware sampling, high-fidelity echo pulse

4. Broadband and amplifying circuit with low noise, selectable damping, excellent matching with low or high frequency probe
5. Excellent EMI design, good EMC performance
6. 5.7" high resolution color LCD display
7. FlexScan Portable PAUT Flaw Detector

PAUT-Instrument

FlexScan Portable



Flexscan portable phased array ultrasonic testing flaw detector is the latest competitive product made by Doppler. It shares reliable quality and capable performance with Phascan. Smaller size, lighter weight, Hardware upgraded, software improved, more efficiency operation. Flexscan is one of the best solutions for on-site inspection.

NOVASCAN portable ultrasound phased array flaw detector



JME

ipsi GULMAY



YXLON



comet



sales@byronglobalent.com



07069992402

Novascan is a full-featured phased array inspection tool. In addition to the phased array function and two-channel TOFD detection module it also supports TFM imaging and FMC data acquisition. The number of imaging points is 1024 * 1024, which greatly improves imaging and shows small defects more clearly.

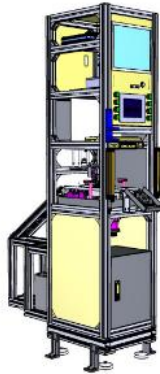
AUTOMATIC SYSTEM

Water Immersion Detection System for New Energy Battery Parts



The automatic ultrasonic immersion inspection system is suitable for high-precision imaging detection of the welding quality of water-cooled plates. The system adopts a special customized process with a detection accuracy of up to ϕ 0.2mm flat bottom hole equivalent and is the best solution to meet high-end water immersion testing needs. This system is compatible with various specifications of water-cooled plates and can also be extended to water immersion testing of automotive components, aerospace components, and other precision components.

Automotive Gear Weld Detection System



Automatic identification of defects and part sortingThe system can realize the automatic detection of internal defects in the welding of the transmission gear. Based on phased array ultrasonic technology, a complete set of automatic system is designed, which can complete the detection and automatic sorting of a gear in 20 seconds. equipment is composed of ultrasonic phased array board, ultrasonic phased array probe, industrial control computer, display, test bench, workpiece delivery mechanism, control cabinet, etc. The intelligent detection and sorting function greatly simplifies the system operation time and the difficulty of data analysis . At present, the system has been applied in mature automobile production line.

PROBE



Wedge Integrated

Features:

- Permanent fixation of elements and wedge
- Built-in wedge or delay line. Smaller size, convenient to use in a narrow space
- With its own wedge, direct angle scanning can be carried out

Applications

- Power: Conventional Welding Inspection, Pressure Vessels, Pipelines, Rotor Inspection.
- Petroleum: Pipelines, Tanks
- Aviation / Aerospace: Composites Delamination & Abhesion, Welding, Landing Gears Inspection
- Transportation: Composites Delamination & Abhesion, Planks
- Conventional: Large Area Scanning; Planks, Sticks, Pipelines Thickness Measurement.

Wheel Series



Features & Applications

1. With water storage coupling system, good coupling effect
2. Very low attenuation tire material
3. Optional with angle adjustment block, can obtain incident angle of $0^{\circ} - 20^{\circ}$
4. It can match automatic scanning device, which is suitable for detection of large-area flat or micro curved surface

SCANNER

DSC-08 Multi-function Automated Crawler



DSC-08 multi-functional automatic crawler is suitable for pipes which OD are greater than 6", or plate welding. 64 or 128 element water column probes are optional to perform corrosion / basic material inspection. 32 or 16 element probes are optional to perform girth welding twosided inspection. Remote control available to move forward and backward, as well as to control the guide screw to move to left and right (500mm).

MOS-04 Chain Scanner for Large Pipelines



MOS-04 is suitable for circumferential weld detection of large diameter pipe. The scanner is easy to assemble and operate, and can be quickly disassembled. MOS-04 scanner can clamp two PA + two TOFD probes simultaneously for weld scanning. It is suitable for circumferential weld scanning of large pipes with diameter ranging from 8"(203mm) ~ 48"(1219mm). The scanner with manual or automatic operation options. Wedge width range: 22mm-42mm.

ACCESSORIES

Probe Cables



The probe cable is composed of a coaxial cable (wire + insulating layer + shielding network) and two connectors respectively connecting the probe and the instrument, which is used for electrical signal transmission between instrument and probe. Commonly used connectors include BNC (Q9), Microdot (L5), Lemo-00 (C5), Lemo-1 (C9), etc. Coaxial cable include RG174, RG178, RG 316, RG58, etc. Unless specified, the impedance value of all cables is 50 ohms. Probe Cables

Adapters & Extension Cables



3BQ0022

3BQ0023



3BQ0021



3BQ0024



3BQ0025



3BQ0026



3BQ0027



3BQ0028



3BQ0030

Performance

Connectors Overview: Doppler provides compatible connectors for all kind of Phased Array Probes in the market.

COMPUTED RADIOGRAPHY

Computed Radiography (CR) is the digital replacement of conventional X-ray film radiography and offers enormous advantages for inspection tasks – the use of consumables is virtually eliminated and the time to produce an image is drastically shortened.

D-DR 2329NDT



We extend our product range of bendable X-ray detectors for industrial radiography with the D-DR 1043B NDT. It is designed for weld inspection on objects with large diameters to cover a wider area and save time due to fewer exposures. With an active area of 97 x 427 mm, you can inspect the weld of a 300 mm pipe with as few as 3 exposures.

HD-CR 35 NDT



Ensures Highest Quality in Specialized Pipe Production

Dee Piping has been a user of HD-CR 35 NDT Computed Radiography system since 2021 in its Palwal Unit III facility and utilizes it in quality control for weld inspection as well as for confirmation of pipe wall thickness. Both X-ray and isotopes such as Selenium-75 and Iridium-192 sources are used to expose pipes of different thickness.

DIRECT DIGITAL RADIOGRAPHY

D-DR 1025B / 1043B NDT



These high-resolution and flexible X-ray detectors are perfectly suited cm / 30 cm and above.

Important features

1. 99 μm pixel pitch (5.0 lp/mm)
2. Equipped with internal shielding for use up to 450 kV
3. Innovative bending mechanism to replace traditional film
4. Connection Unit with built-in wireless access point and battery
5. Simple mounting system
6. Exposure possible on both sides of detector
7. Connector for Gigabit Ethernet and power
8. Dust-tight and waterproof (IP67)

Digital radiography via flat panel



These innovative flat panel detectors (digital detector arrays) for nondestructive testing provide fast and low dose X-ray imaging. These models usher in a new generation of flat panel detectors suitable for a wide range of NDT applications. The 200 μm pixel pitch allows the panel to produce images with outstanding quality. In order to provide the right solution for your application, we offer flat panel detectors in two different physical sizes as well as a choice between 14-bit and 16-bit image depths. DÜRR NDT also offers cabinet upgrades with new flat panel detectors and X-ray imaging software.

D-TECT X - X-RAY INSPECTION SOFTWARE



D-Tect X

D-Tect X provides an optimal and time-saving NDT inspection workflow – the perfect complement to all computed radiography scanners and digital X-ray detectors.

All functions are included: from image acquisition, image evaluation and report generation to data import and export.

JME

ipsi GULMAY



YXLON



comet



sales@byronglobalent.com



07069992402

DRIVE NDT Management Software



DRIVE NDT is a cloud-based management software which integrates all NDT inspection methods and associated processes into a single system. With DRIVE NDT you can organize and control the complete NDT job workflow — including individual test reports, staff, customer and device management, and much more.

A solution for all NDT inspection methods

- Radiographic Testing (RT-D, RT-F, CT)
- Ultrasonic Testing (UT-PA, UT-TOFD, UT-WD)
- Visual Testing (VT)
- Electromagnetic Testing (ET)
- Magnetic Particle Testing (MT)
- Liquid Penetrant Testing (PT)
- Acoustic Emission Testing (AT)
- Acoustic Resonance Testing (ART)
- Infrared/Thermal Testing (IR/TT)
- Leak Testing (LT)
- Optical Methods (OM)

JME
JME GROUP

ipsi GULMAY



YXLON



comet



sales@byronglobalent.com



07069992402

CONVENTIONAL RADIOGRAPHY

Green" NDT X-ray chemicals



Stunning results for industrial X-ray film processing, odorless and free of toxic and cancer-causing substances.

80 % less cleaning

Save cleaning costs and minimize downtime

REACH compliant

Free of boric acid, hydroquinone and aldehyde

Diverse NDT applications

Proven in oil & gas, aerospace, nuclear and military applications

XR 24 NDT



Portable automatic X-ray Film Processor with daylight option – X-ray film processing of the highest level

Most important features



 sales@byronglobalent.com

 07069992402

Integrated Dryer: Perfectly developed films after careful drying

Fully Automatic: Processor controlled developing and intuitive operation

Precise Mechanisms: With precise manufactured roller packages any film development is successful at first attempt

SZN SERIES



Industrial video borescope with 2-way/4-way articulations, 1m-7m working cable, 3.9mm camera lens

Technical Parameters:

Probe cable length: 1.5M max

7m Camera lens diameter: 3.9mm.

Sensor size	1/16" CMOS
Resolution	800x640
Camera length	18mm
View angle	120° -- 150°
Depth of field	8mm --200mm
Light source	6 pcs LED lights (3 level adjustment)
Monitor	4.5" TFT LCD
SD card	32GB (Max: 64G)
Video format	AVI
Picture format	JPEG
Video recording format	ASF

Video output	USB cable & A/V output
Languages	English, Spanish, Italy, Germany, etc 7 languages .
Zoom function	8 times
Picture/video return function	support
Oil/Waterproof standard	IP67
Battery	Charging Li-battery 3.7V
Power	100-240V AC input, 5.5V DC output
Working temperature	-20 --- 60°C
Charging temperature	0---40°C
Accessories	Charger, Manual, waterproof tool box

SZX SERIES



2.8mm diameter handheld video borescope with 4.5 inch monitor, 1.2m probe, 360 degree rotation

Specifications:

1. Camera parameters

Model	SZX301J	External diameter	Φ2.8mm
Pixel point	At 160,000 pixels	Probe length	5 millimetre
Angle of field	100 KWH	Bend angle (top / bottom / left / right)	180°
Depth of field	5-50 millimetre	Insert tube length	Standard length is 1.2 m
Observation direction	foresight	Insert pipe material	wear-resistant tungsten wire weaving
Lighting	15,000 Fiber-optic lighting		

. Probe-oriented parameters

Rlever control and direction	360° turn	fixure	Fixed resistance	internal
guide angle	One side>, 90 °	Guide distance and length	Standard 1 m.2	
Axial control	360 ° Axial rotation	insert tube	A 4-layer tungsten wire woven tube	
System weight	Complete equipment including chassis: 2 kg bare machine: <1 kg	Host size	14.5 cm X 10.5 cm X 4.5 cm	
source	Lithium battery: 3.7V,3600 maH	construction material	Plastic PC shell	
LCD	Bright 4.5-inch active matrix color LCD display	aiming	Adjust the 4th gear manually	
The Data I / O port	USB2.0 Port, WiFi	internal storage	16G High-speed SD Card	
Keybutton function	Menu operation, video, photos.	white balance	automatic	white balance
Image function	Image mirroring, zoom, preview, recording	linguistic support	Support for the 12 countries	

SZH SERIES



4mm portable industrial videoscope with 5.2 inch touch screen, 360 degree rotation, texting annotation

Specifications:

Technical parameters:

Model	SZH401J
Diameter	4mm
Pixels	1MP
DOF	10-200mm
FOV	120°
Light	Optical fiber Light + LED Light
Illuminance	More than 12000 LUX
Articulation	360 Degree all way joystick rotation
Probe Length	Standard 1.5m cable, others can be customized.
Working Temperature	-30°C ~ 80°C
Display	5.2" IPS Touch Screen, resolution 1024x768
Display Size	360*160*60mm
Storage	Built-in 64GB, 32GB U disk
Interface	Type-C (data interface)/USB2.0 (U disk, keyboard or mouse)/HDMI (external display)/3.5mm earphone/power supply DC (8.4V ~12V/2A)
Battery	rechargeable lithium battery pack; available charged online, battery working time ≥4 hours Battery: 8.4V/6800mAh
IP Level	Main Unit IP55, Insertion Tube IP67
Relative humidity	Max90%, no condensation
Operation System	Android smart operating system
Operation Method	Full touch screen and operation keys
File Management	Picture-in-picture display on the same screen, take photo, recording video, dynamic browsing, screen freeze, image zoom, screen rotation, file renaming, text annotation, Negatives, photo editing, graffiti annotation
Image/video Format	JPEG(JPG)/MP4
System Language	Chinese, English

SZG SERIES



handheld video inspection borescope with 3.5/5.1-inch monitor, 360-degree joystick rotation, 3.8mm/6mm diameter lens

Technical Parameters

Probe cable length: 1.5 M max 10m

Camera lens diameter: 3.8mm/6mm.

Specifications:

Sensor size	CMOS
Resolution	1280x720
Camera length	16mm-18mm
View angle	120°
Depth of field	8mm --200mm/20mm -- infinity
Light source	Optical fiber and led light
Monitor	3.5/5.1 inch LCD
articulation	360 degree joystick rotation
SD card	16GB (Max : 64G)
Video format	MOV
Picture format	JPG
Video output	HDMI port
Pictures control	Taking photos、recording、Zoom、freeze、flip、replay、simulate ruler、etc.
Languages	English, Spanish, Italy, Germany, etc 13 languages .
Zoom function	4 times
Picture/video return function	Support
Oil/Waterproof standard	IP67
Working time	More than 4 hours
Battery	2 pcs Li-battery
Working temperature	-20 --- 70°C
Accessories	Charger, Manual, waterproof tool box

INFRARED/UV BLACK LIGHT VIDEO BORESCOPE



portable infrared video borescope with 4 way articulations, 4.5 inch monitor, 6mm camera lens
Specifications:

Technical parameters:

Probe cable length: 1.5 M max 3m

Camera lens diameter: 6mm.

Sensor size	1/16" CMOS
Resolution	800x640
Camera length	18mm
View angle	120° -- 150°
Depth of field	8mm --200mm
Light source	6 pcs LED lights (3 level adjustment)
Monitor	4.5" TFT LCD
SD card	32GB (Max: 64G)
Video format	AVI
Picture format	JPEG
Video recording format	ASF
Video output	USB cable & A/V output
Languages	English, Spanish, Italy, Germany, etc 7 languages .
Zoom function	8 times
Picture/video return function	support
Oil/Waterproof standard	IP67
Battery	Charging Li-battery 3.7V
Power	100-240V AC input, 5.5V DC output
Working temperature	-20 --- 60°C
Charging temperature	0---40°C
Accessories	Charger, Manual, waterproof tool box

SZY SERIES



2-way articulations video borescope with 2.8mm diameter lens, 4.5-inch monitor, support WIFI function

Specifications:

Camera parameters

Model	SZY301T
External diameter	Φ 2.8mm
Probe length	5 mm
Pixel point	160,000 pixels
View field angle	90 °
Deep scenery	5-50 mm
Light source	15,000 fiber guide
Observations	Front view
Insert pipe material	Tungsten wire braid
Bend Angle (top / bottom)	180°
Insert tube length	The standard length is 1 m

Display and System Configuration

Joystick control and direction	Two-direction steering	Fixed position	Fixed internal resistance
Directive angle	One-side > 90 °	Boot distance and length	Standard 1m
Axial control	180 ° axial rotation	Insert the tube	4-Floor tungsten wire woven pipe
System weight	Complete equipment including chassis: 5 kg bare machine: <1 kg	Host size	14.5 cm X 10.5 cm X 4.5 cm
Power supply	Lithium battery: 3.7V, 4200 maH	Structural materials	Plastic PC housing
LCD screen	Bright 4.5-inch active matrix color LCD display	Tuning	Manual adjustment
Data I / O port	USB2.0 port, WiFi wireless connection	Memory	32G High-Speed SD Card
Keybutton function	Menu operations, videos, photos, snap	White balance	Automatic white balance
Image function	Image mirror, preview	Language support	Support for 11 countries
Operating temperature of the host system	-10 °C ~ 50 °C, LCD panel must be heated below 0 °C	Relative humidity	Maximum of 90%, with no condensation
Operating temperature of the video probe	-20 °C ~ 60 °C, below 0 °C should reduce boot operations	Waterproof	Probes and objective lenses can withstand IP67 waterproof
Storage temperature	-20°C~60°C		

SZW SERIES



portable industrial videoscope with 5-inch monitor, 360 degree joystick rotation, 3.9mm/6mm diameter lens

Specifications:**Technical parameters:**

Probe cable length: 1.5 M, max 10m.

Camera lens diameter: 3.9mm/6mm

JME

ipsi GULMAY



YXLON



comet



sales@byronglobalent.com



07069992402

SZR SERIES



4mm/6mm joystick rotation portable industrial endoscope with 5 inch monitor, support WIFI function

Specifications:

Camera parameters

Model	SZR401J/SZR601J	external diameter	Φ 4mm/6mm
Pixel point	1,000,000 pixels	Probe length	16 millimetre
Angle of field	120 degrees	Bend angle (top / bottom / left / right)	180°
Depth of field	20-100 millimetre	Insert tube length	The standard is 1 meter long
Observation direction	foresight	Insert pipe material	Tungsten woven braid
Lighting	6 pcs Highlight LED		

Probe-oriented parameters

Rlever control and direction	360° revolve	fixture	Fixed internal resistance
guide angle	One side>, 90 °	Guide distance and length	Standard 1m
Axial control	360 ° Axial rotation	insert tube	4-layer tungsten wire woven tube
System weight	Complete equipment including chassis: 1.5 kg bare machine: <1 kg	Host size	14.5 cm X 10.5 cm X 4.5 cm
source	Lithium battery: 3.7V,3600 maH	construction material	Plastic PC shell
LCD	Bright 5-inch color IPS display	aiming	Adjust the 4th gear manually
The Data I / O port	USB2.0 Port, WIFI	internal storage	8G High-speed SD Card
Key button function	Menu operations, videos, photos	white balance	automatic white balance
Image function	Image mirroring, zoom, preview, recording, rotation	linguistic support	Support for the 8 countries

Display and system configuration

Operating temperature of the host system	-10 °C 50 °C, the LCD panel must be heated below 0 °C	relative humidity	Maximum of 90%, with no condensation
Video probe operating temperature	-20 °C 60 °C, below 0 °C should reduce boot operations	waterproof	Probe and objective lens can withstand IP67 waterproof
storage temperature	-20°C~60°C		

SZJ SERIES



360 degree joystick rotation flexible industrial videoscope with 4mm/6mm diameter lens, 1m-3m insertion tube

Specifications:

Technical parameters:

TUBE SYSTEM	Probe Diameter:	4mm/6mm
	Tube Length:	1.5m
	Camera pixels:	1 mega pixels
	Image Resolution:	1280 x 720
	DOF:	10-100mm
	FOV:	120°
	Light Source:	LED adjustable light
	Illuminance:	25000Lx
	Protecting device of durability:	80mm buffer protecting device on the connection between tube and handle
	Articulation:	360 degree Joystick-control Articulation
	Bending Angle:	More than 150°
MONITOR SYSTEM	Structure:	Handheld integrated design
	Display:	3.5 inch IPS full view display
	Zoom in / out:	5x
	Image Affect:	Image freezing, cold/warm color
	Image Adjustment:	Image sharpness, contrast, gama value
	Image/Video Format:	JPEG, MP4
	File Storage:	Standard TF card: 16G, max: 64G
	Data Port:	HDMI Video output, MICRO USB Port
	Wireless Image Transmission:	Wifi (optional)
	Battery:	Detachable and rechargeable lithium battery
	Battery Capacity:	3.7V, 3200mAh
	Battery Working Time:	>= 3H
Outer Case Material:	Anti-fall engineering alloy material	

	Water/ Dust Proof:	Probe/tube: IP67, monitor:IP65
Accessories	Standard Configuration:	Case/videoscope/battery card reader/TF card/charger/USB cable/manual
	Optional :	Extendable pole: 0.35-1.8m/mini HDMI cable/foldable tripod

CHEAP VIDEO BORESCOPE



SZQ series 6mm industrial video endoscope with 1m-10m probe cable, 3.5 inch wireless screen

Specifications:

Insertion Tube parameters:

Image Sensor CMOS Image Sensor

Resolution (Dynamic/Static)

320(H) X 240(V)

720(H)x525(V)(N) / 720(H)x625(V)(P)

712 (H)x480(V) (N) / 720(H)x576(V)(P)

Insertion Tube Tip Diameter : 5.5mm .

Frame Rate ~30 fps

Exposure Automatic

White Balance Fixed

Field-of View (FOV) : 80°

Depth-of-Field (DOF) : 10mm - 300 mm

System Magnification 8X at 15 mm

Light Source : 4 White LED

Working Temperature : (-20°to 70°C)

Material of Tube : Semi-rigid / Soft-metal

Extended Length : 1.0 M

Waterproof Standard : IP67

DVM Specifications

Power DC : 5V

Display : 3.5" TFT LCD Monitor 320 x 240 Pixels

Interface Mini : USB 2.0 / AV Out

Battery Rechargeable: Li-Polymer Battery (3.7V)

Video Output Format : NTSC & PAL

Recording Medium SD Card : (Capacity up to 32G)

Still Image Storage Format JPEG : (640 x 480)

Video Recording Storage Format : AVI (320 x 240)

Language English + option: (Nine language)

Working/Storage Temperature: (-20°to 60°C)

While Charging Battery Temperature: (0°to 40°C)

JME

ipsi GULMAY



YXLON



comet



sales@byronglobalent.com



07069992402

Specifications:

1. Camera parameters and system configuration

model	CL801T		
Lens diameter	Φ 7.5mm	pixel	One megapixels
Probe length	17 MM	Image sensor	1/6inch
Visual Angle	120 Degrees	Depth of field (visual r angle)	From 10-100 mm
illuminant	8 LED light sources	Observe the direction	Front-end direct view
thermostability	300°	Cooling hole pipe diameter	8mm
Insert tube material	Stainless steel wire woven tube / set pipe	Insert tube length	Standard: 1.0m
Bend Angle (upper / bottom)	180°	Position fixed	One key lock
image resolution ratio	1280*720JPG	Video resolution	1280*720MP4
attended mode	Android or Windows	The Data I / O port	The USB2.0 port is available
Key function	Take photos, turn on the lights	internal storage	computer. Mobile phone storage
brightness control	Manual adjustment, section 3 gear	construction material	Plastic PC case
Product weight	Including packaging equipment: <1.5 kg, bare machine 0.5 kg	white balance	automatic white balance

2. Working environment

System operating temperature	0°C~50°C	ambient humidity	15-90%RH
Video probe operating temperature	0°C 300°C, below 0°C should reduce both operations	waterproof	The inserted tube and probe can withstand the IP58 waterproof
storage temperature	0°C~60°C	Packaging accessories	hold-all. Clean the bag. Manual et al
working air pressure	6-7kg/cm ²	auxiliary instrument	air compressor

Notes for high temperature detection:

1. In the work, the compressed air cannot be interrupted, which will lead to lens damage;
2. Air pressure 6-7kg / cm ², stop for 5 minutes, cool the lamp before use;
3. Compressed air pressure: 5.5-6.9bar, clean, dry compressed air-cooling effect will be better;

MILITARY AND POLICE SERIES



Military and police series ultra-far infrared high-definition recording endoscope, equipped with a 5-inch high-definition LCD display screen, operation under the scorching sun is still clearly visible; The sight glass is equipped with ultra-far-infrared high-definition camera, and the camera side supports real-time recording, which can be used in criminal investigation, security check, explosive disposal, anti-narcotics, anti-smuggling, search and rescue and other fields, with a wide range of applications

SZR-T SERIES VIDEOSCOPE



6mm/8.5mm diameter, 4.5 inch monitor, 2 way articulations, 1m-3m cable, support USB

SW SERIES VIDEOSCOPE



4mm/6mm diameter, 5 inch monitor, 360 degree articulations, support **WIFI**, 1m-3m cable

SH series video borescope



4mm/6mm diameter, 3.5 inch monitor, 360 degree all way articulations, 1m-3m cable

PIPELINES INSPECTION CAMERA

Uses: It can be used for the inspection and observation of places with high temperature, toxicity, nuclear radiation and direct observation by the human eye. This method is mainly used for automobiles, aircraft engines, pipelines, mechanical parts, etc., and can achieve non-destructive testing without disassembling or destroying the assembly and equipment stopping operation, and can also be used for video inspection of internal welds in ventilation ducts, air conditioning pipes, water pipes, industrial pipelines, corrosion, blockage, discrepancies, foreign bodies, etc.

YKPT50 model

50mm PT camera, 60m-150m cable length, 9" display

YKPT60 model

65mm PT Camera, 60m-120m cable length, 10.1 inch display

JME

ipsi GULMAY

**YXLON**

comet



sales@byronglobalent.com



07069992402

Rigid bore scope



1mm/2mm/2.7mm/4mm/5mm/6mm/8mm/10mm camera lens; 0°/30°/45°/70°/90° view angle



S2700 0° 2.7 x 175mm

S2730 30° 2.7 x 175mm

S2770 70° 2.7 x 175mm

S2790 90° 2.7 x 175mm



S4000 0° 4 x 175mm

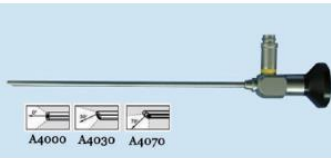
S4030 30° 4 x 175mm

S4045 45° 4 x 175mm

S4070 70° 4 x 175mm

S4090 90° 4 x 175mm

S40110 110° 4 x 175mm



A4000 A4030 A4070



www.ykndt.com | 11

JME
JULY 2011

ipsi GULMAY



YXLON



comet



sales@byronglobalent.com



07069992402

Flexible Optic Fiberscope



0.8mm /3mm/ 4mm/ 6mm camera lens, no/2-way / 4-way fiberscope 1.0m optic cable

3D measurement videoscope



3.9mm/6.0mm camera lens, 10 inch monitor, 360 degree articulation, 3D measurement function, 1.5m/2m/3m cable

UV video endoscope



6mm camera lens, 5 inch monitor, 360 degree joystick rotation, 1m-3m cable



Telescopic Inspection Camera

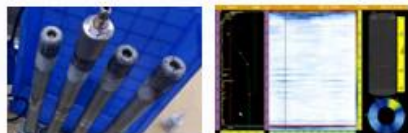
23mm camera lens, 7 inch monitor, 3.6m-6.6m telescopic pole

PHASED ARRAY

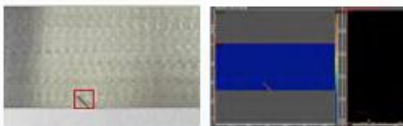
Straddle Type Turbine Root (AutoCAD Geometric)



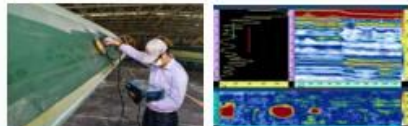
Wind Turbine Bolt Inspection (Cylindrical Guided Wave)



TFM Inspection of Groove



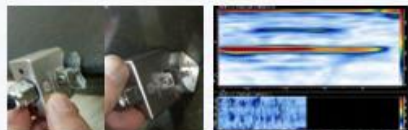
FPR Composite Wind Turbine Inspection



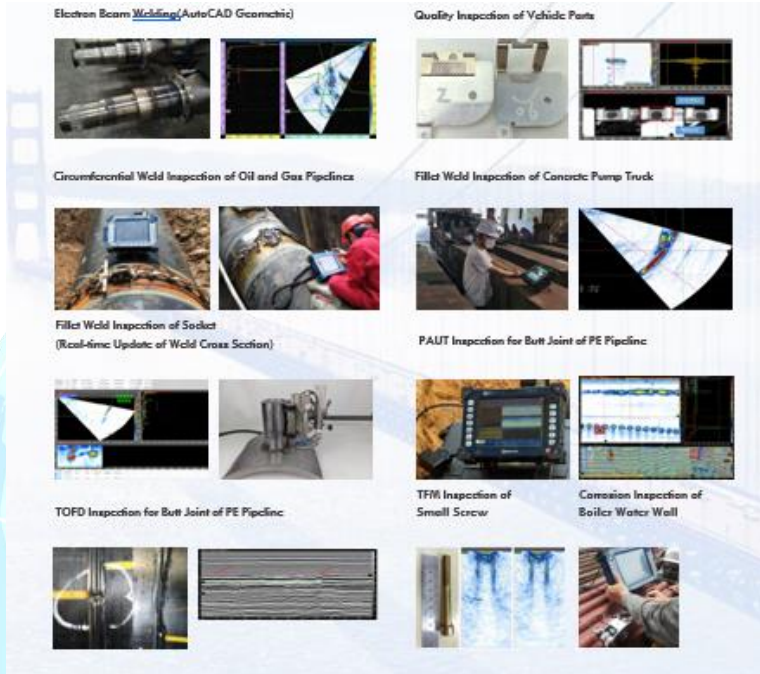
Inspection of Aviation Aluminum Honeycomb Panel



Aircraft CFRP Composite R Corner Inspection (Concave Probe)



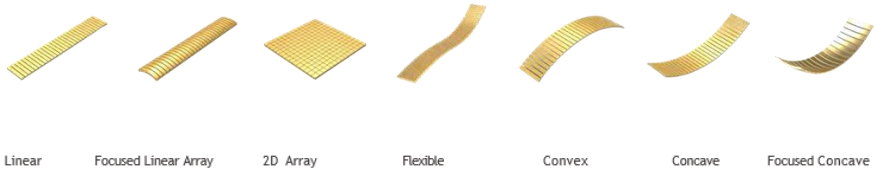
Ultrasonic Inspection Applications



PROBES



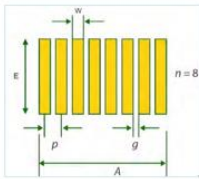
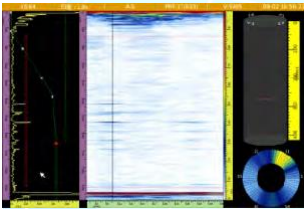
Doppler conventional ultrasonic phased array probes are widely used, with frequency range 0.5M Hz to 20MHz, element number 8 to 1024 and internal element pitch 0.2mm to 2.0mm. The array configuration includes Linear(L), Matrix(M), Annular(A), Concave(C), Convex(V), wedge integrated, etc. Other types of probes can be customized according to customers' requirements. Wedge, connectors, adapters and extension cables can also be customized.



Linear Focused Linear Array 2D Array Flexible Convex Concave Focused Concave

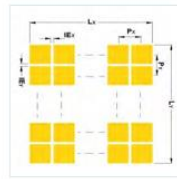


Annular Daisy Arrays Annular Focusing Circular Array Wedge Integrated-Linear Array Dual Linear Dual Matrix



1D Probe parameters

A: Active aperture
 E: Elevation
 g: Internal element spacing
 w: Element width
 p: Elementary pitch
 n : Number of elements in the PA probe
 Active aperture: $A = n \times p$
 Precise active aperture: $A = (n - 1) \times p + w$



2D Probe parameters

Primary pitch P_x :
 Secondary pitch P_y :
 Primary element spacing L_x :
 Secondary element spacing L_y :
 Primary aperture A_x :
 Secondary aperture A_y :
 Secondary aperture

Contact- Wear Resistant Probes

A single crystal transducer, sound wave vertical incidence and direct contact.

Features

Wear resistant stainless steel housing

Wear resistant front end protective layer, long service life Good match acoustic impedance with most metals

3 types of performance to meet the cast majority of testing requirements:

“PL” Universal Series, “PH” Short Pulsing Series, “C” Composite Series



sales@byronglobalent.com

07069992402

Applications

Simple structure of metals

Large plates, bars, forgings, metals and non-metals Small tanks, pipes, castings, bars

Sandwich and laminated structures Materials velocity and characteristics Coarse grain or high attenuation materials



Probe Dimensions

Nominal Element Size		A		B		C		D		E		Connector Direction
mm	in	mm	in	mm	in	mm	in	mm	in	mm	in	
10	0.375	20.0	0.79	42.5	1.67	24.0	0.94	14.0	0.55	2.0	0.08	Lemo-00 / Side Mounting
24	0.94	30.0	1.18	59.5	2.34	45.0	1.77	29.0	1.14	2.5	0.10	Lemo-1 / Side Mounting



N2-2P24

N2-4P10

N2-10P5-H

Probe Specification

Frequency	Nominal Element Size		Model		
	MHz	mm	in	PL	PH
1	10	0.375		N2-1P10	N2-1P10-H
	24	0.94		N2-1P24	N2-1P24-H



sales@byronglobalent.com

07069992402

2	10	0.375	N2-2P10	N2-2P10-H
	24	0.94	N2-2P24	N2-2P24-H
4	10	0.375	N2-4P10	N2-4P10-H
	24	0.94	N2-4P24	N2-4P24-H
5	5	0.20	N2-5P5	N2-5P5-H
	10	0.375	N2-5P10	N2-5P10-H
10	5	0.20	/	N2-10P5-H

N3-5P20-H



N3-4P10



Probe Specification					
Frequency	Nominal Element Size		Model		
	MHz	mm	in	PL	PH
0.5	19	0.75	/	N4-0.5P19-H	/
	25	1.00	/	N4-0.5P25-H	/
	29	1.125	/	N4-0.5P29-H	/
1	13	0.50	N4-1P13	N4-1P13-H	N4-1C13
	19	0.75	N4-1P19	N4-1P19-H	/
	25	1.00	N4-1P25	N4-1P25-H	/
	29	1.125	N4-1P29	N4-1P29-H	/
2.25	13	0.50	N4-2.25P13	N4-2.25P13-H	N4-2.25C13
	19	0.75	N4-2.25P19	N4-2.25P19-H	/
	25	1.00	N4-2.25P25	N4-2.25P25-H	/
3.5	13	0.50	N4-3.5P13	N4-3.5P13-H	/
	19	0.75	N4-3.5P19	N4-3.5P19-H	/
	25	1.00	N4-3.5P25	N4-3.5P25-H	/
5	13	0.50	N4-5P13	N4-5P13-H	/
	19	0.75	N4-5P19	N4-5P19-H	/
7.5	13	0.50	N4-7.5P13	N4-7.5P13-H	/
	25	1.00	N4-7.5P25	N4-7.5P25-H	/
10	13	0.50	N4-10P13	N4-10P13-H	/



JME

ipsi GULMAY



YXLON



comet



sales@byronglobalent.com

07069992402

Magnetic Control X-Ray Pipeline Crawler



X-ray testing machine belongs to Non-destructive Testing machines. It is used for welding line inspection. Compared with other testing machine, x-ray machine is more strictly and the result can be kept easily for long terms.

X-ray pipeline crawler is special designed for pipeline joint inspection project, to assure the quality in pipeline construction. Compared with portable x-ray machine, it is much more automatic and

high-efficient. Instead of portable x-ray machine, it has become the mainly and important testing tool during pipeline inspection process.

Construction:

1. Controller: magnetic positioning system
2. Crawler
3. X-ray generator
4. Battery box
5. Battery charger

Features: Crawler

- 1- Electronic speed control technology is adopted to achieve the slow starting and low- speed positioning. It can guarantee the x-ray point to face the joint more accurately.
- 2- Perform very good and won't be affected by the electric welding machine.
- 3- It uses multiple real-time function to protect the X-ray generator from water, over-voltage, over- current, and overheat.
- 4- It also has the ability to inspect the energy of battery automatically. The crawler will turn back if the battery is under low power. If no signal, it also returns automatically after 30 minutes.

Technical Specifications

Model	ZY-4C	ZY-3C	ZY-10C
Locating System	Magnetic Medium Control (180x123x145mm,2.0kg)		
Available Outside Diameter	8"~16" (with extended axle)	12.7"~28" (with extended axle)	20"~47" / 60" (with extended axle)
Available Outside Diameter	219~406mm	323~711mm	508~1200/1500mm
Crawler Dimensions	1280×170×150mm	1320×217×200mm	1170×244×230 mm
Position Precision	±3 mm		
Moving Distance	5 km (Round trip)		
Crawler Weight	29 kg	45 kg	50 kg
Lead Acid Battery	7Ah	7Ah, 12Ah	17Ah
Battery Weight	28 kg	28, 44 kg	63 kg
Max Climbing Slope	15°	30° (With pressure bar)	40°

Turning Radius	≥10D	≥10D	≥7D
Drive Type	Two Wheels Driven	Two Wheels Driven	Four Wheels Driven
Full charge exposure	60 min	60 min	90 min
Crawling Speed	8m/min	12m/min	15m/min
Suitable X-ray Generator	XXHA-1605L XXHA-2005L	XXHA-2005 XXHA-2505	XXHA-2505 XXHA-3005

X RAY TUBE

Model	XXHA-1605L	XXHA-2005L	XXHA-2005	XXHA-2505	XXHA-3005
Max. Penetrate	14mm	23mm	23mm	33mm	38mm
MIN Diameter	219mm	273mm	323mm	457mm	500mm
Generator Dimension Φ	160*900mm	175*950mm	245*910mm	290*970mm	310*1070mm
Generator Weight	14kg	18kg	23kg	33kg	39kg
Generator Voltage	160kV	100-200kV	100-200kV	150-250kV	200-300kV
Focus Size	1.0*2.5mm	1.0*2.5mm	1.0*2.5mm	1.0*2.5mm	1.0*3.5mm
Radiation Angle	360° × 40°				
Exposure Time	0-5 min				
Anode Target	Cone target				
Operate Temp.	-20°C~+75°C				
Insulation	SF6				
Available Humidity	≤90%				

Portable X-ray NDT Machine



Frequency conversion air insulation portable X-ray detection machine can be widely used in shipbuilding, machinery manufacturing, aviation, rail, pressure vessels, boilers, oil, chemical, defense industry and other departments for non-destructive testing. Particularly applicable to construction site operation and high-altitude operations.

In this series of NDT machine, X-ray generator adopt the SF₆ gas insulated and anode grounded technology, forced cooling fan; controller is complete digitization. You can adjust current & output power, and shooting time & relaxing time by yourself. You can also set up a password to keep the set-up data from modifying.

Mini Portable X-ray Flaw Detector

Model: ZY-2003



Industrial LED Film Viewer

Model: ZY-D50



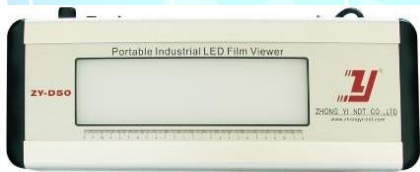
sales@byronglobalent.com

07069992402

		XXHA-3505	180-350	>3.5	1.0*3.5	45	330*330*840	40
Ceramic tube directional	40°	XXG-1605	35-160	>1.5	2.0*2.0	20	210*210*560	18
		XXG-2005	50-200	>2.0	2.0*2.0	30	210*210*560	18
		XXG-2505	80-250	>2.5	2.0*2.0	40	280*280*620	25
		XXG-3005	130-300	>3.0	2.5*2.5	50	320*320*650	33
		XXG-3505	180-350	>3.5	2.5*2.5	55	340*340*680	37
		XXG-3505 (Continuous shoot for 10min)	180-350	>3.5	2.5*2.5	65	340*340*680	37
Ceramic tube panoramic with level target	360°*25°	XXGH-2005	50-200	>2.0	1.0*2.4	27	290*290*650	24
		XXGH-2505	80-250	>2.5	1.0*2.4	37	320*320*690	32
		XXGH-3005	130-300	>3.0	1.0*3.4	47	340*340*720	37
Ceramic tube panoramic with cone target	360°*30°	XXGHA-2005	50-200	>2.0	1.0*2.5	24	280*280*670	26
		XXGHA-2505	80-250	>2.5	1.0*2.5	34	320*320*690	36
		XXGHA-3005	130-300	>3.0	1.0*3.5	40	340*340*720	38
Tube Current	5mA							
Power Supply	AC 190V-260V 50HZ							
Controller Size (mm)	310*310*145 mm							
Controller Weight (kg)	9kg							
Insulating Material	SF6 gas							
Working Temperature	-25°~ +40°							
Relative Humidity	≤85%							
Standard Condition	1. Focus: 600mm 2. Time of exposure :5min 3. Film: Kodak brand film, double-sided lead film 4. Film Developing: temperature ±2°C, developing 5min, Density ≥2.0							
Safe Pressure	0.35-0.50 MPa (Prohibition of use when it is lower than 0.35 MPa)							

IV Parameters

Classify	Beam Angle	Model	Tube voltage (KV)	Capacity (KW)	Focus size (mm)	Max. Penetration A3 steel (mm)	X-ray generator	
							Size (mm)	Weight (kg)
Glass tube Directional	40°	XXQ-1005	40-100	>1.0	1.0*1.0	8	180*180*540	10
		XXQ-1605	35-160	>1.5	1.5*1.5	20	220*220*630	16
		XXQ-2005	50-200	>2.0	1.5*1.5	30	280*280*680	24
		XXQ-2505	80-250	>2.5	2.0*2.0	40	320*320*750	35
		XXQ-3005	130-300	>3.0	2.5*2.5	50	340*340*840	41
		XXQ-3505	180-350	>3.5	2.5*2.5	55	340*340*840	42
Glass tube panoramic with level target	360°*25°	XXH-1605	35-160	>1.5	1.0*2.0	18	220*220*630	15
		XXH-2005	50-200	>2.0	1.0*2.4	27	280*280*680	23
		XXH-2505	80-250	>2.5	1.0*2.4	37	320*320*750	33
		XXH-3005	130-300	>3.0	1.0*3.4	47	330*330*840	40
		XXH-3505	180-350	>3.5	1.0*3.4	50	330*330*840	40
Glass tube panoramic with cone target	360°*40°	XXHA-1605	35-160	>1.5	1.0*2.5	15	220*220*630	15
		XXHA-2005	50-200	>2.0	1.0*2.5	24	280*280*680	23
		XXHA-2505	80-250	>2.5	1.0*2.5	34	320*320*750	33
		XXHA-3005	130-300	>3.0	1.0*3.5	40	330*330*840	40



ZY-D50 is the new model of our LED film viewer. Theoretical work life is more than 50,000 hours. Arbitrary regulate brightness, widely used in unit radiography evaluation of mechanical, chemical, shipbuilding, boiler and power area. Portable design makes its extremely suitable for the occasion of liquidity in the field work.

Industrial LED Film Viewer

Model: ZYVF-12A



Industrial portable LED film viewer is a new series product that followed by the new standard of Nondestructive Testing of Pressure Equipment and GB/T 19802-2005 Industrial Radiography Published Film View Pieces Lamp.

Theoretical work life is more than 50,000 hours. Arbitrary regulate brightness, widely used in unit radiography evaluation of mechanical, chemical, shipbuilding, boiler and power area. Portable design makes its extremely suitable for the occasion of liquidity in the field work.

High-frequency X-ray Machine

ZY-220HP & ZY-300HP



JME

ipsi GULMAY



YXLON











comet







sales@byronglobalent.com



07069992402

			
X-ray generator	Controller	Connecting cable	Power cable
			
Earthing wire	Fuse	Instruction manual	Accessories bag

OTHER NDT PRODUCT

Item Name	Model/Picture
Densitometer	ZY-586 
Film Cassettes	film size:10*24cm  film size:10*40cm
Lead Screen	0.125*100*240mm  0.125*100*400mm
IQI	ASTM 1A,ASTM 1B  6FEEN,10FEEN 13FEEN

Lead Marker	5*3*0.8mm	
	7*4*1mm	
	9*6*2mm	
	13*9*2mm	
Lead Marker Box		
Magnetic Paddle		
Alram Light		
		
Dosimeter	3000A	
Darkroom Red Light		
Darkroom Timer		
Film Hanger (3-in-1 type)	film size:10*24cm	
	film size:10*40cm	
Film processing Tank	5 Gallon	

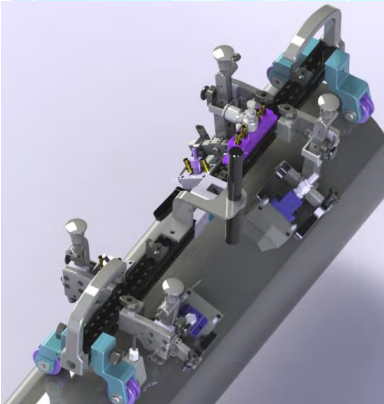


FC-01**PA+TOFD Scanner**

Doppler FC-01 type PA+TOFD welds scanner is suitable for pipe butt weld inspection with diameter over 6"(150mm) by axial direction, and flat butt weld inspection. Combine with four probe clamps & one wheel type encoder. Free collocation of PA probes & TOFD probes by inspection needs.

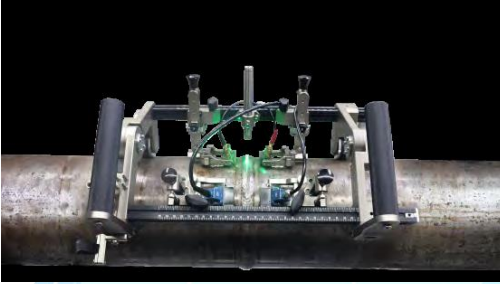
**FC-29**

The FC29 scanner supports the simultaneous installation of one group of TOFD probes and two groups of PA probes. The scanner body is composed of four individually movable magnetic wheels and a clamp with springs, and is equipped with a rechargeable laser to indicate the center position of the probe, avoiding misalignment during scanning.



FC-30

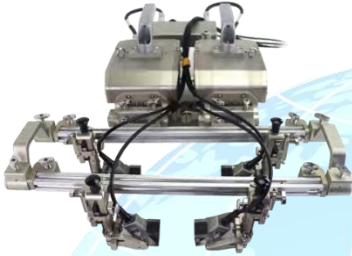
The FC30 scanner is one of the best manual scanners for single axis coding detection of pipeline circumferential welds. The standard configuration of the scanner can support clamping four probes. The mounted probe can be either phased array probes or TOFD probes. The probe holder is optimized to operate without tools, saving time when replacing and adjusting probes and wedges.

**DSC-05****Scanner for Small Pipes**

The DSC-05 is an advanced remote control inspection car, designed specifically for the surface of magnetic metal materials, which can firmly adhere to magnetic materials such as carbon steel. The car mainly moves along the axis of the workpiece and is equipped with various detection devices and sensors to conduct comprehensive detection operations on the workpiece. Its versatility enables it to assemble corrosion detection devices and weld detection devices to meet different detection needs.

DSC-28

Multi-functional Automatic Crawler



The DSC 28 multi-functional automatic crawler is a remote-controlled, magnetic wheel scanner, can run freely on ferromagnetic workpieces to realize ultrasonic detection. It is applied to large tank and pipeline weld detection, plate weld detection, material detection, corrosion detection and ultrasonic thickness measurement.

Air-coupling Probes

Features

Non-contact air coupled ultrasound (ACU) High sensitivity and high signal to noise ratio

Optional 60dB built-in amplifier, the amplifier is USB interface

Customizable series for focusing and working in water mist environment

Specifications and Dimensions

Models	Frequency (KH)	Active Aperture (mm)	Focus	Standard Interface	Operating Mode
ABO.25C24NF-T	250	24	NO	BNC	Emission Receive Emission Receive
ABO.25C24NF-R	250	24	NO		
ABO.42C24NF-T	420	24	NO		
ABO.42C24NF-R	420	24	NO		

JME
JULY 2018

ipsi GULMAY



YXLON



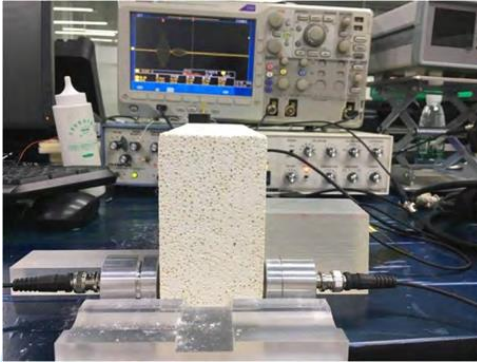
comet



sales@byronglobalent.com



07069992402



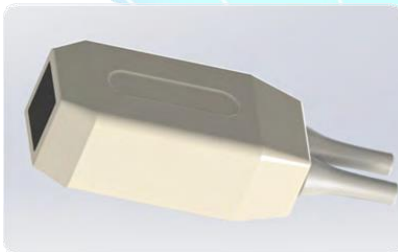
Imaging Ultrasound Array Probe



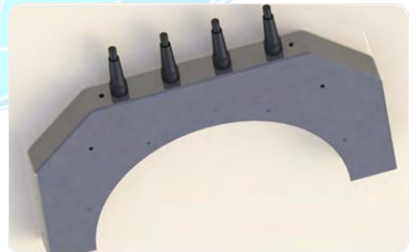
Endoscopic unit imaging probe



Linear array probe



Matrix probe

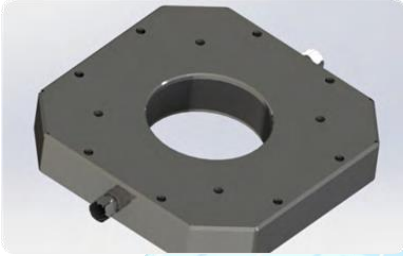


concave array probe



sales@byronglobalent.com

07069992402



360° circular cylindrical array probe



convex array probe

Power Probe Series

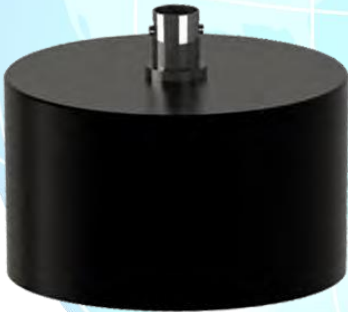
Features for Single Element

Frequency: 0.5-10MHz Aperture: 1-120mm Focusing number: $F > 0.5$

Aperture: 1-120mm Focusing number: $F > 0.5$

focal area $> 5000W / cm^2$ High efficiency, low heating, allowing continuous wave excitation

Customized mechanical structure, lead and MRI compatible



Power Ultrasonic Laterally Focused Probe

JME
JULIUS-MEYER-SONNENSYSTEME

ipsi GULMAY



YXLON



comet



sales@byronglobalent.com



07069992402

Specifications and Dimensions

Models	Frequency (MHZ)	Active Aperture (mm)	Radius (mm)	Dimensions (mm)	Height (mm)	Standard Interface	Cable Length (mm)	MRI Compatibility
--------	-----------------	----------------------	-------------	-----------------	-------------	--------------------	-------------------	-------------------

TP0.5P64BF64-X-BNC	0.5	64	64	70	40	BNC	0m or 1.5m	-
TPMIC10BF10-4-BNC	1	10	10	13	16	BNC	4m	Yes
TPMPI0BF10-3-BNC	1	10	10	13	16	BNC	3m	Yes
TP1P24BF24-X-BNC	1	24	24	28	33.5	BNC	0m or 1.5m	-
TP1P64BF64-X-BNC	1	64	64	70	40	BNC	0m or 1.5m	-
TP1P64-φ20BF64-X-BNC	1	64(open pore20)	64	70	40	BNC	0m or 1.5m	-
TP1.1P24BF24-X-BNC	1.1	24	24	28	33.5	BNC	0m or 1.5m	-
TP2P24BF24-X-BNC	2	24	24	28	33.5	BNC	0m or 1.5m	-
TP2P64BF64-X-BNC	2	64	64	70	40	BNC	0m or 1.5m	-
TP8P8BF8-X-BNC	8	8	8	11	14	BNC	0m or 1m	-
TP10P6BF6-X-BNC	10	6	6	9	12	BNC	0m or 1m	-

ULTRASOUND PROBES for medical and research

With more than a decade of experience in the design and manufacture of custom ultrasound probes, from individual customization to high-volume production, we have developed many know-how and manufacturing processes, and provide high-performance solutions for a wide range of innovative applications.

Receiver Probe Series

Features

For receiving and organizing ultrasonic signals in photoacoustic / thermoacoustic imaging
Optimize receiving bandwidth

Optimize electromagnetic shielding



Contact - Delay Line Probes and Wedges

Delay Line (P)

Replaceable delay lines

Ultra small contact area of probe front, suitable for high bending surface detection, such as turbine blades

3 types handle bars: horizontal, 45° and 90° Replaceable horizontal handle bar

Delay line can be purchased separately, model: 1GW2912 Microdot (L5) tail-end mounting connector



JME

ipsi GULMAY



YXLON



comet



sales@byronglobalent.com



07069992402

Delay Line Specification				
Model	Length		Nominal Element Size	
	mm	in	mm	in
DLΦ3-5.5	5.5	0.22	3	0.125
DLΦ6-9.5	9.5	0.37	5	0.20
			6	0.25
DLΦ6-12.7	12.7	0.50	5	0.20
			6	0.25
DLΦ13-9.5	9.5	0.37	13	0.50
DLΦ13-12.7	12.7	0.50	13	0.50

Contact- TOFD Probes

TOFD Probe and Delay Line can generate refracting longitudinal in steel, and use time of flight diffraction technique to determine the cracks.

Features

High damping and wide bandwidth performance High efficiency for welding inspection

Quick change structure of probe and delay line IHC for irrigation, holes, carbides of delay line

Applications

Plate butt weld inspections, Directional irregular defects, Near surface defects detection



Contact Probe - Thickness Measurement Probes

Doppler provides an existing solution for most corrosion application sites, providing a complete set of twin- crystal and single-crystal thickness measuring probes for thickness measurement of workpiece, work with Accur 1/3/5 different thickness measuring instruments, to ensure the accuracy of thickness measurement to the greatest extent; besides the measurement of corrosion wall thickness, it can also be used for small diameter pipelines, etc. Measurement and application of tubing, boiler tube wall, penetrating coating, spot weld integrity, probes with different frequencies, contact sizes and special high temperature applications are available for selection.



Applications

- Intermittent contact detection with high temperature workpiece (castings, forgings etc.)
- Direct flaw detection
- Detection of curved surface of workpiece

Features

- Supply 0° (ZH type) longitudinal incidence and 45°/ 60°/70° (AH type) shear wave incidence delay lines
- Supply 13 / 25 / 38mm three ZH types standard height delay lines, and 45°/60°/70° three shear wave AH types delay lines
- Two types of delay lines:
HT1: maximum 20seconds on workpiece at 200 °C(392 °f) HT2: maximum 10seconds on workpiece at 300 °C(572 °f)
- Quick change structure of delay line and probe
- Standard lengths of ZH type delay line matching with probes:
Φ10 mm (0.375 in) crystal probe with 13 mm (0.5 in) delay line
Φ13/19 mm (0.5/0.7 in) crystal probe with 25 mm (1.0 in) delay line
- Probe face can be processed into different shapes to ensure good coupling with workpiece
- Top mounting Microdot (L5) connector

High Frequency Probes

High frequency probe refers to a single element transducer with a frequency higher than 20MHz, which includes HF contact probe, HF immersion probe and HF immersion self – focusing probe.

Low frequency normal probe



Hollow focusing probe



LW + SW dual waveforms probe



Dual creeping wave focusing probe



low temperature thickness



water wedge dual element probe

Features Applications

Probes for Custom and Specific Applications

From the beginning of Doppler, it has always been our advantage to provide customers with custom and special probes design, and leading the probe technique frontiers. To understand customers' demands and application requests, our experienced application engineers, probe design experts work together with our customers, using the best way to provide perfect application solutions and product designs, to meet & satisfy the demands of challenging ultrasonic market.

Both contact probes and immersion probes have integrated delay lines, and self - focusing immersion probes do not have delay lines or lens the frequency range is 20 ~ 50MHz

With broadband and narrow pulse performance, the probe has excellent near surface resolution and vertical and horizontal resolution A very small focal spot diameter in the near field or focus point Side mounted microdot connector for contact probe by default, and top mounted UHF interface for immersion probe and immersion self- focusing probe by default

Minor cracks on the surface

High resolution detection effect is required, such as the ability to find small cracks or pores

With the ideal surface condition, temperature and excitation setting, the thinnest thickness that 50MHz probe can reach in steel is 0.05 mm (0.0019 in) in thickness measurement mode

Scanning acoustic microscope

System matching probe



The high-speed rotating probes are applied in the automatic detection system for steel pipe flaw detection and thickness measurement.



JME
JME GROUP

ipsi GULMAY



YXLON



c-met



sales@byronglobalent.com



07069992402

- PIPELINE CRAWLERS
- NDT EQUIPMENTS
- ULTRASONIC PRODUCTS
- RADIOGRAPHY ACCESSORIES
- MT PRODUCTS
- FILM DRYER DENSITOMETER
- AUTOMATIC SYSTEM ETC....

✉ byronglobalent@gmail.com

🐦 @Byronglobalent

📷 byron_globalent

📘 Byron Global Enterprises NIG



CONTACT US

Km 16 East West road Rumuosi,
Opp Wazobia FM, Along Choba Road,
Port Harcourt, Nigeria



PARTNERS

